



## Automated pallet warehouse for Britvic

Logistex has installed an automated pallet shuttle system for Britvic at their Leeds Distribution Centre.

The new system is optimising use of space, increasing throughput, reducing truck movements and consequently improving health and safety.

### Features:

- 15,000 pallet locations
- Pallet profile and integrity check
- Solution accepts stock on both EURO and CHEP pallets
- Satellite powered by capacitor
- Throughput capability 288 pallets received and despatched per hour
- On-site Residential Support

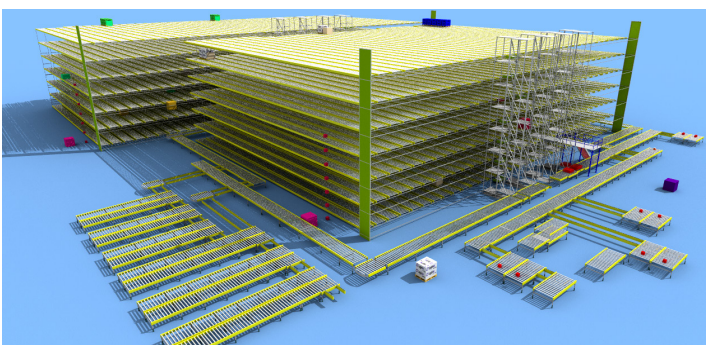


**Britvic**  
Leading soft drinks supplier

### The Client's Brief:

With the introduction of new production lines at their site in Leeds, Britvic had identified an increase in fork lift truck movements and the need for a significant uplift in capacity and throughput. To meet the demands of the new production equipment, reduce manual movement of stock and maintain a safe operation, the decision was taken to automate the pallet warehouse on site.

Britvic had previously installed a manually operated shuttle storage system, with plans to automate this at a later stage. The existing shuttles available on site were not able to be utilised within the proposed automation and so a full replacement was needed.



### The Logistex Solution:

Logistex worked closely with Britvic to design a new solution which sees the previously manual fork truck operated system converted to a fully automated pallet shuttle solution. The Automha pallet shuttle, integrated into the solution by Logistex, uses capacitors rather than batteries for power so there is no need for prolonged charging periods. Also, because the shuttles are lighter than an automated storage and retrieval system, they use less power per move.

The system is controlled by Logistex's own warehouse control software, LWS Reflex, which manages the pallet inventory into and out of the automated store. For despatch, pallet selection is based on pre-configured allocation rules and loads are delivered in sequence to despatch lanes.

The new system is optimising use of space, increasing throughput, reducing truck movements and consequently improving health and safety.

Britvic's Site Operations Manager, Mark Young, says; "Automating the end of line has allowed us to move more pallets per hour than we could previously move. This has helped us improve our customer service figures out of Leeds while adhering to our health and safety needs."